

CSWA Certification Program

Certified SolidWorks Associate Certification Program



Benefits of the CSWA Certification Program

- Prepares students for workplace demands and motivates them to continue learning.
- Monitors exam assessment data to adapt and improve certification material, industry alignment skills, and instructor training.
- Provides additional revenue by administering the onsite, on-line, Certification Exam.

The Certified SolidWorks Associate (CSWA) Certification Program provides the skills users need to work in the design and engineering fields. The CSWA Program offers hands-on tutorials, instructor resources, and preparation tools for the CSWA Exam.

CSWA PROGRAM COMPONENTS:

CSWA Provider

CSWA Certification

1) CSWA Provider

A CSWA Provider is a university, college, technical, vocational, or secondary educational institution. A CSWA Provider provides the following:

- A testing facility with internet access
- Computers with the SolidWorks Education Edition installed with a current maintenance contract
- A printer for CSWA certificates
- Onsite proctor to administer the CSWA exam

2) CSWA Certification

The CSWA Certification demonstrates the user's aptitude with SolidWorks, 3D solid modeling techniques, design concepts, and commitment to professional development. The CSWA Certification requires passing the CSWA Exam.

The CSWA Exam is a comprehensive, on-line, proctored, timed test administered by a CSWA Provider. The CSWA Exam measures the competencies in the following areas:

- 3D CAD modeling technology
- Application of design and engineering principles
- Recognition of industry practices and standards



The SolidWorks Education Program is committed to providing CSWA candidates with innovative and effective learning materials. You'll find the solutions, training, tools, and support you need to help your students and distinguish your institute from the competition.

For more information on the SolidWorks Education Program, please visit www.solidworks.com/Education.

How do I become an elite CSWA Provider?

Enhance your institute's expertise and opportunities by joining the CSWA Provider Program. If you are currently on subscription and utilize SolidWorks in one or more courses, contact your local SolidWorks value added reseller or visit www.solidworks.com/CSWA.



CSWA Exam local language support

- Brazilian Portuguese
- Chinese Simplified
- Chinese Traditional
- English
- French
- German
- Italian
- Japanese
- Korean
- Spanish
- Turkish



RECOMMENDED COMPETENCIES FOR THE CSWA EXAM

Minimum for 45 hours of classroom instruction focused on the following areas:

Basic modeling theory and drawing theory

- Recognize 3D modeling techniques
- Identify material, dimensions, mass properties, and section properties
- Identify the function and elements of the FeatureManager
- Ability to apply all 2D Sketch Tools and Entities
- Utilize SolidWorks Help topics
- Create a drawing from a part or an assembly
- Ability to insert and modify views, sheets, and annotations

Advanced modeling theory and analysis

- Knowledge to apply SimulationXpress to a simple part
- Ability to apply material, restraints, and loads
- Interpret results

Part modeling

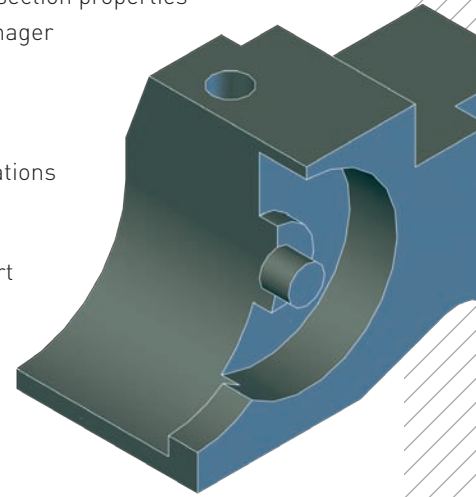
- Build a part from a detailed illustration
- Specify Document Properties
- Calculate mass, volume, and material properties
- Apply Extruded Boss/Base, Extruded Cut, Fillet, and Chamfer features
- Identify the reference plane, part origin, and apply design intent

Advanced part modeling and analysis

- Ability to interpret engineering terminology
- Build an advanced part from a detailed illustration
- Edit sketches and features
- Apply Revolved Boss/Base, Revolved Cut, Linear, and Circular Pattern features

Assembly modeling

- Identify the components to construct the assembly from a detailed illustration
- Build a bottom-up assembly with Standard Mates and part configurations
- Identify the first fixed component and position
- Calculate the center of mass



CSWA Exam Breakdown

Category	Quantity	× Points	= Total
Basic modeling theory and drawing theory	2	5	10
Advanced modeling theory and analysis	2	5	10
Part modeling	1	30	30
Advanced part modeling and analysis	1	20	20
Assembly modeling	1	30	30
			100

Minimum passing grade = 70

Corporate Headquarters

Dassault Systèmes SolidWorks Corp.
300 Baker Avenue
Concord, MA 01742 USA
Phone: 1-800-693-9000
Outside the US: +1-978-371-5011
Fax: +1-978-371-7303
Email: SolidWorks.Education@3ds.com

Europe Headquarters

Phone: +33-(0)4-13-10-80-20
Email: SolidWorksEU.Education@3ds.com

Japan Headquarters

Phone: +81-3-6270-8700
Email: SolidWorksJP.Education@3ds.com

Asia/Pacific Headquarters

Phone: + 65-6511-9188
Email: SolidWorksAP.Education@3ds.com

Latin America Headquarters

Phone: +55-11-3186-4150
Email: SolidWorksLA.Education@3ds.com